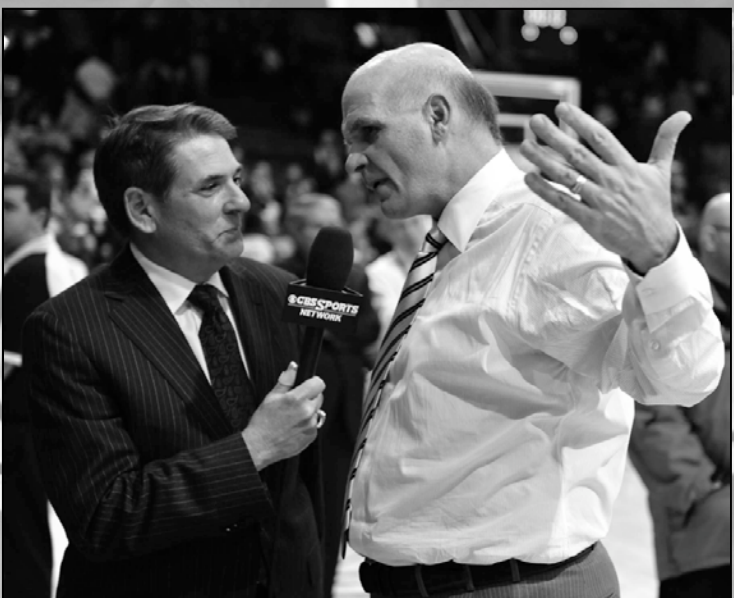


MEDIA INFORMATION



ATLANTIC 10 CONFERENCE

On March 2, 1975, the idea of what is now the Atlantic 10 Conference was conceived. What started as an eight-school, men's basketball-only affiliation has grown into a 16-university, 21-sport league that is universally hailed as one of the best conferences in the country.

That growth and prominence is a direct result of the ideals and commitments of the member institutions of the Atlantic 10 – Butler University, the University of Dayton, Duquesne University, Fordham University, The George Washington University, La Salle University, University of Massachusetts, University of North Carolina at Charlotte, University of Rhode Island, University of Richmond, St. Bonaventure University, Saint Joseph's University, Saint Louis University, Temple University, Virginia Commonwealth University, and Xavier University.

In 2011-12, the Atlantic 10 was proactive in navigating the sweeping conference realignment issues, adding Butler University and Virginia Commonwealth University, both of which began full membership on July 1, 2012. The league was declared the "winner" of conference realignment by several media outlets, arguably strengthening the league to its best-ever lineup with a record 16 members institutions. The additions were part of a five-year Strategic Initiative Plan that was adopted during the 2010-11 academic year.

The 16 member institutions of the A-10 are united and strengthened by their diversity. Each is extraordinary in its educational mission, whether of a Catholic faith, a private university or a land grant institution. The varied pursuits of each member prove that there are many threads that weave the fabric for a great conference.

The Atlantic 10 Conference, with a total population of over 82 million people within its geographic footprint of nine states and the District of Columbia, will crown champions in 21 sports this year: baseball, men's and women's basketball, men's and women's cross country, field hockey, men's golf, women's lacrosse, men's and women's indoor and outdoor track & field, women's rowing, men's and women's soccer, softball, men's and women's swimming & diving, men's and women's tennis, and women's volleyball.

The presidents and chancellors of Atlantic 10 institutions, in conjunction with Atlantic 10 Commissioner Bernadette V. McGlade, have made a strong commitment to making the academic and athletics equation a successful one. Over the years, the league membership has strived to better recognize the academic accomplishments of its student-athletes. The Commissioner's Honor Roll, which cites every Atlantic 10 student-athlete with a 3.5 grade point average or better, recognized a record 2,728 student-athletes in 2011-12.

The league sponsors Academic All-Conference teams in each of its sports and honors one student-athlete per sport as the A-10 Student-Athlete of the Year. Moreover, the A-10 provides four postgraduate scholarship grants to qualified student-athletes.

The Atlantic 10 has 56 of the more than 950 Division I sports teams being honored with public recognition awards for their latest multi-year Academic Progress Rate

scores. The Atlantic 10 Conference ranks fourth in number of teams publically recognized by the NCAA and fifth in overall APR average among all 32 Division I Conferences with a 981 average.

The Atlantic 10 boasted a third-place ranking in the single-year Graduation Success Rate (GSR) among all Division I leagues. Measured in a six-year window, 89 percent of freshmen enrolling in an A-10 institution in 2004 graduated. Twelve of the league's institutions were above the national four-year GSR average of 80 percent and five of those programs – Dayton, George Washington, Richmond, Saint Joseph's, and Xavier – are all over 90 percent. The Atlantic 10 also rates in the Top 10 in men's basketball, women's basketball and baseball in the single-year GSR. The league is ninth nationally in men's basketball, graduating at a 74 percent rate, nearly seven percent above the national average.



Bernadette McGlade
Commissioner

www.atlantic10.com



All four rounds of the 2013 Atlantic 10 Men's Basketball Championship will be held in the new Barclays Center in Brooklyn, N.Y. from March 14-17. For the fourth consecutive year, the championship game will be televised on CBS. (photo by Bruce Damonte)

ATLANTIC 10 CONFERENCE

11827 Canon Blvd., Suite 200, Newport News, Va. 23606

(757) 706-3040 • Fax (757) 706-3042

Commissioner	Bernadette McGlade
Senior Associate Commissioner	Ed Pasque
Senior Associate Commissioner	Debbie Richardson
Associate Commissioner	Wendy Larry
Associate Commissioner	Jay DeFruscio
Assistant Commissioner	Jill Redmond
Director of Championships	Lucas Feller
Director of Media Relations and Communications	Drew Dickerson
Associate Director of Communications	Melissa Kristofak
Advanced Media and Communications Assistant	Caitlin Bonner
Administration/Operations Assistant	Rachel Anderson
Operations Assistant	Tom Waterman
Business Manager	Barbara Wetters
Coordinator of Men's Basketball Officials	Reggie Greenwood

2012-13 OPPONENTS/TOURNAMENTS

OPPONENT DIRECTORY

Team	Head Coach	SID	SID Email	Website
American	Jeff Jones	Nancy Yasharoff	yasharof@american.edu	aueagles.com
Butler	Brad Stevens	Jim McGrath	jmcgrath@butler.edu	butlersports.com
BYU	Dave Rose	Kyle Chilton	kyle_chilton@byu.edu	byucougars.com
Charlotte	Alan Major	Brent Stastny	bmstastn@uncc.edu	charlotte49ers.com
Coppin State	Ron Mitchell	Roger McAfee	rmcafee@coppin.edu	coppinstatesports.com
Creighton	Greg McDermott	Rob Anderson	randerson@creighton.edu	gocreighton.com
Dayton	Archie Miller	Doug Hauschild	Doug.Hauschild@notes.udayton.edu	daytonflyers.com
Drexel	Bruiser Flint	Mike Tuberosa	mt85@drexel.edu	drexeldragons.com
Duquesne	Jim Ferry	Dave Saba	saba@duq.edu	goduquesne.com
Fairfield	Sydney Johnson	Jack Jones	jjones@mail.fairfield.edu	fairfieldstags.com
Florida State	Leonard Hamilton	Chuck Walsh	cwalsh@fsu.edu	seminoles.com
Fordham	Tom Pecora	Joe DiBari	dibari@fordham.edu	fordhamsports.com
George Washington	Mike Lonergan	Jesse Hooker	jhooker@gwu.edu	gwsports.com
Harvard	Tommy Amaker	Tim Williamson	twilliam@fas.harvard.edu	gocrimson.com
Iona	Tim Cluess	Brian Beyrer	bbeyrer@iona.edu	icgaels.com
La Salle	John Giannini	Kevin Bonner	bonner@lasalle.edu	goexplorers.com
Massachusetts	Derek Kellogg	Brian Henry	bwhenry@admin.umass.edu	umassathletics.com
Morgan State	Todd Bozeman	Leonard L. Haynes IV	lhaynesiv@aol.com	morganstatebears.com
Notre Dame	Mike Brey	Bernie Cafarelli	cafarelli.1@nd.edu	und.com
Penn	Jerome Allen	Mike Mahoney	mahoneyw@pobox.upenn.edu	pennathletics.com
Rhode Island	Danny Hurley	Mike Laprey	mlaprey@uri.edu	gorhody.com
Richmond	Chris Mooney	Mark Kwolek	mkwolek@richmond.edu	richmondspiders.com
Saint Louis	Rick Majerus (Interim- Jim Crews)	Brian Kunderman	bkunderm@slu.edu	slubillikens.com
St. Bonaventure	Mark Schmidt	Jason MacBain	jmacbain@sbu.edu	gobonnies.com
Temple	Fran Dunphy	Larry Dougherty	larrydoc@temple.edu	owlsports.com
VCU	Shaka Smart	Scott Day	sdday@vcu.edu	vcuathletics.com
Villanova	Jay Wright	Mike Sheridan	michael.sheridan@villanova.edu	villanova.com
Xavier	Chris Mack	Tom Eiser	eiser@xavier.edu	goxavier.com
Yale	James Jones	Tim Bennett	timothy.bennett@yale.edu	yalebulldogs.com

2012 Coaches vs. Cancer Classic

Hagan Arena

Thursday, November 8

SJU vs. Wheeling Jesuit (Exhibition) - 7 p.m.

Monday, November 12

SJU vs. Yale - 7 p.m.

Barclays Center, Brooklyn, N.Y.

Friday, November 16

BYU vs. Florida State - 7 p.m. - truTV

Saint Joseph's vs. Notre Dame - 9:30 p.m. - truTV

Saturday, November 17

Consolation - 7 p.m. - truTV

Championship - 9:30 p.m. - truTV



2013 Atlantic 10 Championship

March 14 - 17

Barclays Center, Brooklyn, N.Y.

First Round - Thursday, March 14

Gm 1: #8 Seed vs. #9 Seed - Noon

Gm 2: #5 Seed vs. #12 Seed - 2:30 p.m.

Gm 3: #7 Seed vs. #10 Seed - 6:30 p.m.

Gm 4: #6 Seed vs. #11 Seed - 9 p.m.

Quarterfinals - Friday, March 15

Gm 5: #1 Seed vs. Game 1 Winner - Noon

Gm 6: #4 Seed vs. Game 2 Winner - 2:30 p.m.

Gm 7: #2 Seed vs. Game 3 Winner - 6:30 p.m.

Gm 8: #3 Seed vs. Game 4 Winner - 9 p.m.

Semifinals - Saturday, March 16

Gm 9: Game 5 Winner vs. Game 6 Winner - 1:30 p.m.

Gm 10: Game 7 Winner vs. Game 8 Winner - 4 p.m.

Championship - Sunday, March 17

Gm 11: Game 9 Winner vs. Game 10 Winner - 1 p.m. - CBS



Jesuit Basketball Spotlight

The Jesuit Basketball Spotlight project, which is in its fourth year, highlights games between men's and women's teams from the 28 Jesuit colleges and universities across the United States. Each of the 28 is dedicated to strong academics and teaching women and men to serve others and live a faith that does justice.

Jesuit schools on Saint Joseph's schedule this season are: Wheeling Jesuit (exhibition game), Creighton, Fairfield, Fordham, Xavier and Saint Louis.

The Spotlight project includes awareness announcements during these designated games and during gamecasts on radio and television, and other awareness opportunities. Jesuit, Catholic colleges and universities in the United States have more than 200,000 students currently enrolled and more than 1.7 million living alumni. The Jesuit educational mission began in Europe approximately 500 years ago.

www.ajcunet.edu/jesuitbasketball



SAINT JOSEPH'S SPORTS NETWORK



The Saint Joseph's Sports Network (SJSN) marks its 23rd year of operation in 2012-13. Since its beginnings in 1990, SJSN's coverage of Hawk athletics has grown and included Phil Martelli's *HawkTalk* radio program and the nationally-renowned *HawkTalk* television show, which ran for 15 years.

For the second straight year, every Saint Joseph's game will be broadcast on one of the top sports radio stations in the nation, SportsRadio 610 WIP. This marks the most comprehensive radio package for Hawk basketball since the 2005-06 season. The station will also be the home for Phil Martelli's *HawkTalk* radio show, which will air on Monday evenings from January to March.

Hawk fans everywhere will be able to hear the broadcast of every game through audio streaming at the Hawks' official athletics site, www.SJUHawks.com, which is provided free of charge through Stretch Internet. (Broadcast schedule on page 2)



Matt Martucci

PLAY-BY-PLAY ANNOUNCER

Matt Martucci is in his fourth season as the Hawks' play-by-play announcer. He has been with the Saint Joseph's Sports Network since 2006 and has also served as the announcer for women's basketball and baseball broadcasts over the internet.

Martucci has worked as the producer for both Phil Martelli's *HawkTalk* television and radio shows and currently serves as the on-air talent for audio and video features on Hawks' All-Access.

He has also worked with 97.5 The Fanatic since March 2011 as the morning update anchor during ESPN's *Mike and Mike in the Morning*.

A 2006 graduate of Syracuse University's Newhouse School of Communications, he was the director of broadcasting/account executive for the Atlantic City Surf independent league baseball team for two seasons. Martucci has broadcast college basketball and football for Lincoln University, Lock Haven University, and Syracuse University, in addition to high school football in Williamsport, Pa.

Martucci, who received the William J. Bennett Award for dedication and loyalty to the SJU men's basketball program in 2011, began his broadcasting career with WAER at Syracuse University, and has also worked with ESPN Radio 1450 in Atlantic City.

A native of Brodheadsville, Pa., he is pursuing his master's degree in business administration from Saint Joseph's and resides in Cherry Hill, N.J.



Joe Lunardi

COLOR ANALYST

Joe Lunardi enters his 23rd season on the Saint Joseph's Sports Network as radio color analyst and has served as the co-host of Phil Martelli's *HawkTalk*, both on radio and television.

Lunardi was promoted in 2012 to associate vice president for marketing and communications at Saint Joseph's after six years as assistant vice president. He has managed the University brand initiatives for the past decade and played a key role this summer in launching the University's new image campaign.

A 1982 graduate of Saint Joseph's, Lunardi returned to his alma mater in 1987 as director of media relations. He has also served as director of external relations, director of university communications, and assistant vice president for university communications.

Away from the University, Lunardi is the nationally-known "Bracketologist" for ESPN, ESPN Radio, and ESPN.com. His ESPN.com Bracketology site generates over 10 million hits per season. He correctly forecast 67 out of 68 NCAA Tournament teams last season and has covered over 800 Hawk games in his career.

In 1995 and 2004, Lunardi received the William J. Bennett Award for dedication and loyalty to the SJU men's basketball program. Lunardi and his wife, Pam, a 1984 SJU graduate, reside in Drexel Hill, Pa., with their daughters, Emily and Elizabeth.



Veteran color analyst Joe Lunardi (left) and play-by-play announcer Matt Martucci (right) are in their fourth year together as SJU's broadcast team.



Phil Martelli's *HawkTalk* radio show is aired weekly from January through March on SportsRadio 610 WIP. The show will be broadcast live on Monday evenings from JD McGillicuddy's in Havertown, Pa. During the hour-long show, Martelli and co-host Joe Lunardi field questions from callers and the on-location audience.

HAWKS ONLINE

The Hawks' men's basketball program maintains a strong presence on the internet via the official website of Saint Joseph's Athletics, SJUHawks.com, and various social media platforms.

SJUHawks.com, your one-stop shop for all things Hawk athletics, contains updated statistics, game notes, and in-game live stats for all Saint Joseph's home games and selected road games. Through Hawks All-Access, fans can follow every home game via live streaming audio, as well as most home games through the premier streaming video broadcast in the Atlantic 10. All road games are covered with streaming audio, with streaming video available for selected contests through a sharing agreement with other CBSSports.com College Network partner schools.

The site will also host audio podcasts and video segments featuring the men's basketball team throughout the season.

The Hawks can also be found on Facebook, Twitter and YouTube. Through SJU's social media outlets, you can receive breaking news updates, connect with other Hawk fans around the world, and check out Saint Joseph's on-demand video features at any time.



Hawks All-Access Video Streaming Schedule*

Streaming available via subscription to Hawks All-Access on SJUHawks.com through the CBSSports.com College Network.

November 8	Wheeling Jesuit (Exhibition)	7:00 p.m.
November 12	Yale	7:00 p.m.
November 20	Harvard	7:30 p.m.
November 30	American	7:00 p.m.
December 22	Fairfield	2:00 p.m.
December 28	Iona	7:00 p.m.
January 9	Butler	7:00 p.m.
January 23	St. Bonaventure	7:00 p.m.
February 13	Richmond	7:00 p.m.
February 23	George Washington	4:00 p.m.
March 2	Fordham	7:00 p.m.
March 6	Rhode Island	7:00 p.m.

Schedule subject to change

* Streaming of selected away contests with CBS College Sports partners will be available - complete schedule listed on SJUHawks.com



Basketball was often the secondary topic on Phil Martelli's *HawkTalk* when the SJU coach and co-host Joe Lunardi got together on the most unique coach's show in the country, which aired for 15 seasons.

Phil Martelli's HawkTalk TV Show

For 15 seasons, **Phil Martelli** hosted the most unique coach's show in the nation with *HawkTalk*, which was televised in Philadelphia on Comcast SportsNet. The unscripted half-hour show provided a different twist on the traditional coach's show, with a "Tonight Show" format, putting the emphasis on jokes and lighthearted interviews. In 2001, *The Sporting News* called it the "nation's best coach's show."

Over the years, the guests ranged from Saint Joseph's students to Martelli family members to sports celebrities and politicians. Former Pennsylvania governor Ed Rendell was among the high-profile guests on *HawkTalk*, along with former Philadelphia Eagles player Jon Runyan, author and *Washington Post* columnist John Feinstein, SJU greats Jack Ramsay and Jameer Nelson, former Philadelphia Phillies pitcher Mitch Williams, Philadelphia Flyers great Bernie Parent and SJU alum Vince Papale, whose story was told in the 2006 major motion picture *Invincible*.



Hawks' All-Access will stream at least 12 games from Hagan Arena on the official SJU athletics website, SJUHawks.com.

HAWKS on SOCIAL MEDIA

www.facebook.com/saintjosephshawks
www.youtube.com/saintjosephshawks
 @SJUHawks
 @SJUHawks_MBB

HAWKS ON TV

Saint Joseph's will again have a strong presence on television in 2012-13, with 10 games scheduled for national broadcasts and at least another four games set for local/regional coverage.

The Hawks' two games in the Coaches vs. Cancer Classic from Brooklyn will be seen on truTV. SJU's trip to Creighton will be broadcast on ESPN3 while the first meeting with conference foe VCU will be seen nationally on the CBS Sports Network. The Big 5 game with Penn will be seen on either ESPN2 or ESPNU, while the contest at Massachusetts will be picked up by ESPN2. The home games with Xavier and Temple are slated for broadcast on the CBS Sports Network, as is the game at Saint Louis.

SJU's game with La Salle at The Palestra will mark one of the first in the Atlantic 10's new arrangement with the NBC Sports Network, which includes a six-game package for 2012-13.

In addition to regional broadcasts of all Atlantic 10 Tournament games from the Barclays Center in Brooklyn, the 2013 A-10 Men's Basketball Championship will be televised nationally on CBS for the third year in a row, on March 17 at 1 p.m.

In October 2012, the Atlantic 10 secured eight-year partnerships with ESPN, CBS Sports Network and NBC Sports Network for its media and television rights. The agreements more than double the men's and women's basketball national exposure for the A-10 membership and will begin in 2013-14.

SJU on TV

Nov. 16	vs. Notre Dame	9:30 p.m.	truTV
Nov. 17	Coaches vs. Cancer Classic	7/9:30 p.m.	truTV
Dec. 1	at Creighton	3:00 p.m.	ESPN3
Dec. 31	at Drexel	4:00 p.m.	TCN
Jan. 17	at VCU	9:00 p.m.	CBS SN
Jan. 19	Penn (Palestra)	5:00 p.m.	ESPN2/U
Jan. 26	Xavier	6:00 p.m.	CBS SN
Feb. 2	Temple	6:00 p.m.	CBS SN
Feb. 6	at Dayton	7:00 p.m.	TCN, TWC Ohio
Feb. 9	at Massachusetts	2:00 p.m.	ESPN2
Feb. 13	Richmond	7:00 p.m.	TCN
Feb. 16	at La Salle (Palestra)	1:00 p.m.	NBC SN
Feb. 23	George Washington	4:00 p.m.	TCN, CSN MA
Feb. 27	at Saint Louis	8:00 p.m.	CBS SN

All times Eastern and subject to change
More telecasts could be added

NBC SN = NBC Sports Network
CBS SN = CBS Sports Network
TCN = The Comcast Network (Pa.)
CSN MA = Comcast SportsNet Mid-Atlantic
TWC Ohio = Time Warner Sports Channel Ohio



Atlantic 10 National TV Schedule

ESPN/ESPN2

Nov. 13	Harvard at Massachusetts	10 am
Nov. 13	Butler at Xavier	4 pm
Jan. 19	Gonzaga at Butler	9 pm
Feb. 9	Saint Joseph's at Massachusetts	2 pm
Feb. 16	Xavier at Dayton	Noon
Mar. 2	Butler at VCU	Noon

ESPN2

Jan. 26	Temple at Butler	6 pm
Feb. 26	Memphis at Xavier	7 pm

ESPNU

Nov. 13	Wichita State at VCU	7 pm
Dec. 6	Vanderbilt at Xavier	7:30 pm
Jan. 12	Saint Louis at Temple	6 pm
Jan. 19	Penn at Saint Joseph's *	5 pm
Feb. 9	Temple at Dayton	11 am
Feb. 22	Saint Louis at Butler	7 pm

CBS

Mar. 10	VCU at Temple	Noon
Mar. 17	A-10 Final	1 pm

CBS Sports Network

Nov. 25	Villanova at La Salle	1 pm
Nov. 28	George Mason at Rhode Island	8 pm
Dec. 1	Miami (Fla.) at Massachusetts	2 pm
Dec. 8	Kansas St. at George Washington	2 pm
Dec. 15	Alabama at VCU	Noon
Dec. 22	Murray State at Dayton	Noon
Dec. 22	Florida State at Charlotte	2 pm

Dec. 31	New Mexico at Saint Louis	7:30 pm
Jan. 10	Massachusetts at Saint Louis	TBA
Jan. 12	George Washington at Xavier	4 pm
Jan. 16	Xavier at St. Bonaventure	TBD
Jan. 17	Duquesne at Massachusetts	7 pm
Jan. 17	Saint Joseph's at VCU	9 pm
Jan. 19	St. Bonaventure at Temple	1 pm
Jan. 24	VCU at Richmond	8 pm
Jan. 26	Xavier at Saint Joseph's	6 pm
Jan. 26	La Salle at VCU	8 pm
Jan. 30	Dayton at Xavier	9 pm
Jan. 31	Butler at Saint Louis	9 pm
Feb. 2	Rhode Island at Butler	4 pm
Feb. 2	Temple at Saint Joseph's	6 pm
Feb. 6	Saint Louis at Fordham	TBA
Feb. 14	Massachusetts at VCU	9 pm
Feb. 16	Butler at Fordham	4 pm
Feb. 16	Temple at Massachusetts	6 pm
Feb. 19	VCU at Saint Louis	9 pm
Feb. 21	La Salle at Temple	7 pm
Feb. 23	VCU at Xavier	2 pm
Feb. 27	Saint Joseph's at Saint Louis	8 pm
Mar. 2	Massachusetts at Xavier	2 pm
Mar. 6	Richmond at VCU	8 pm
Mar. 9	Xavier at Butler	Noon
Mar. 16	A-10 Semifinals	1:30 pm
Mar. 16	A-10 Semifinals	4 pm

All times Eastern
* May be aired on ESPN2 or ESPNU



HAWKS ON NATIONAL TV

Dec. 20, 1986	at Dayton	ESPN	W 78-75 OT
Mar. 3, 1986	West Virginia (N)	ESPN	W 72-64
Mar. 14, 1986	Richmond (N)	CBS	W, 60-59
Mar. 16, 1986	Cleveland State	CBS	L, 65-69
Mar. 1, 1987	at Penn State	ESPN	W, 81-78
Mar. 3, 1987	at Temple	ESPN	L, 68-84
Dec. 10, 1987	at Temple	ESPN	L, 62-83
Dec. 12, 1988	Temple (P)	ESPN	L, 57-63
Jan. 31, 1994	at Cal.-Santa Barbara	ESPN	W, 70-56
Feb. 17, 1995	St. Bonaventure	ESPN2	L, 61-69
Feb. 19, 1996	St. Bonaventure	ESPN2	W, 64-56
Mar. 7, 1996	George Washington	ESPN2	L, 71-81
Nov. 20, 1996	vs. Duke	ESPN	L, 60-89
Jan. 21, 1997	Duquesne	ESPN2	W, 82-74
Feb. 25, 1997	Massachusetts	ESPN2	W, 78-63
Mar. 8, 1997	Rhode Island (N)	ESPN	W, 61-56
Mar. 13, 1997	Pacific (N)	CBS	W, 75-65
Mar. 15, 1997	Boston College (N)	CBS	W, 81-77 OT
Mar. 20, 1997	Kentucky (N)	CBS	L, 68-83
Jan. 20, 1998	Xavier	ESPN2	L, 62-77
Feb. 7, 1998	George Washington	ESPN	L, 62-67
Feb. 17, 1998	Temple	ESPN2	L, 42-50
Feb. 21, 1998	Massachusetts	ESPN	L, 79-82
Feb. 9, 1999	Temple	ESPN2	L, 78-85
Feb. 15, 2000	La Salle (P)	ESPN2	L, 56-59
Feb. 29, 2000	Temple (P)	ESPN2	W, 62-59
Feb. 13, 2001	Temple	ESPN2	W, 71-62
Feb. 27, 2001	Massachusetts	ESPN2	W, 84-69
Mar. 15, 2001	Georgia Tech (N)	CBS	W, 66-62
Mar. 17, 2001	Stanford (N)	CBS	L, 83-90
Jan. 28, 2002	at Villanova	ESPN2	L, 73-102
Feb. 2, 2002	at Temple	ESPN2	L, 72-82
Feb. 16, 2002	at Xavier	ESPN	L, 77-84
Feb. 19, 2002	Massachusetts	ESPN2	W, 72-67
Feb. 23, 2002	Dayton	ESPN	W, 70-68
Mar. 3, 2002	Temple (P)	ABC	L, 84-87 2OT
Feb. 3, 2003	Villanova (P)	ESPN2	W, 92-75
Feb. 15, 2003	at Dayton	ESPN2	L, 55-65
Mar. 21, 2003	Auburn (N)	CBS	L, 63-65 OT
Nov. 14, 2003	Gonzaga (N)	ESPN2	W, 73-66
Jan. 17, 2004	at Xavier	ESPN	W, 81-73
Feb. 2, 2004	at Villanova	ESPN2	W, 74-67
Feb. 7, 2004	La Salle (P)	ESPN	W, 89-63
Feb. 28, 2004	at Rhode Island	ESPN2	W, 57-55
Mar. 2, 2004	St. Bonaventure	ESPN2	W, 82-50
Mar. 18, 2004	Liberty (N)	CBS	W, 82-63
Mar. 20, 2004	Texas Tech (N)	CBS	W, 70-65
Mar. 25, 2004	Wake Forest (N)	CBS	W, 84-80
Mar. 27, 2004	Oklahoma State (N)	CBS	L, 62-64
Nov. 23, 2004	at Kansas	ESPN2	L, 51-91
Jan. 29, 2005	Xavier	ESPN2	W, 67-59
Feb. 7, 2005	Villanova (P)	ESPN2	L, 52-67
Feb. 26, 2005	at Rhode Island	ESPN	L, 60-65
Mar. 1, 2005	at George Washington	ESPN2	W, 71-56
Mar. 12, 2005	George Washington (N)	ESPN	L, 67-76
Mar. 21, 2005	Holy Cross	ESPN2	W, 68-60
Mar. 23, 2005	at Texas A&M	ESPN2	W, 58-51
Mar. 29, 2005	Memphis (N)	ESPN2	W, 70-58
Mar. 31, 2005	South Carolina (N)	ESPN	L, 57-60
Dec. 6, 2005	Kansas (N)	ESPN	W, 70-67
Dec. 10, 2005	Ohio State (P)	ESPN	L, 74-81
Dec. 31, 2005	vs. Gonzaga	ESPN2	L, 94-102
Jan. 17, 2006	Charlotte	ESPN2	L, 50-57
Feb. 7, 2006	Villanova (P)	ESPN2	L, 58-71
Feb. 11, 2006	George Washington	ESPN2	L, 62-64
Feb. 14, 2006	at Temple	ESPN2	L, 44-57
Feb. 28, 2006	at Xavier	ESPN2	W, 68-58



It was standing-room only in Hagan Arena as the Hawks defeated #22 Temple on a game televised nationally on ESPN2.

Mar. 11, 2006	Xavier (N)	ESPN	W, 62-61
Mar. 20, 2006	Hofstra	ESPN2	L, 75-77 OT
Feb. 1, 2007	Saint Louis	ESPN2	L, 62-73
Feb. 6, 2007	at Villanova	ESPN2	L, 39-56
Feb. 22, 2007	Temple (P)	CSTV	W, 92-76
Nov. 13, 2007	at Syracuse	ESPN	L, 69-72
Nov. 29, 2007	Gonzaga	ESPN2	L, 65-70 OT
Jan. 26, 2008	at Temple	ESPN2	W, 68-67
Feb. 4, 2008	Villanova (P)	CSTV	W, 77-55
Feb. 28, 2008	Saint Louis	ESPN2	L, 55-64
Mar. 6, 2008	Xavier	ESPN	W, 71-66
Mar. 15, 2008	Temple (N)	ESPN	L, 64-69
Mar. 21, 2008	Oklahoma (N)	CBS	L, 64-72
Nov. 24, 2008	Texas (N)	ESPN2	L, 50-68
Nov. 25, 2008	Alabama (N)	ESPN2	W, 80-54
Nov. 26, 2008	Indiana (N)	ESPN2	L, 48-58
Dec. 11, 2008	at Villanova	ESPN2	L, 56-59
Jan. 18, 2009	Charlotte (P)	CBS SN	W, 78-69
Feb. 8, 2009	at Massachusetts	CBS SN	W, 68-64
Feb. 12, 2009	Temple	ESPN2	L, 59-61
Feb. 18, 2009	at Saint Louis	CBS SN	L, 71-73
Feb. 26, 2009	Xavier (P)	ESPN2	L, 54-68
Mar. 5, 2009	at Temple	CBS SN	L, 59-68
Dec. 9, 2009	Villanova (P)	ESPN2	L, 89-97
Jan. 23, 2010	Dayton	ESPN2	W, 60-59
Feb. 14, 2010	at Massachusetts	CBS SN	L, 62-70
Dec. 3, 2010	at Villanova	ESPN2	L, 60-71
Jan. 29, 2011	Temple (P)	ESPN2	L, 54-72
Mar. 8, 2011	at George Washington	CBS SN	W, 71-59 OT
Mar. 12, 2011	Dayton (N)	CBS SN	L, 61-64
Dec. 17, 2011	Villanova	CBS SN	W, 74-58
Feb. 25, 2012	Temple	ESPN2	W, 82-72

CBS SN = CBS Sports Network

MEDIA COVERAGE

SAINT JOSEPH'S SPORTS NETWORK

Matt Martucci (play-by-play)
Joe Lunardi (color analyst)

Saint Joseph's Sports Network
c/o Athletic Communications
5600 City Ave.
Philadelphia, PA 19131

SportsRadio 610 WIP (AM)
400 Market St., Floor 9
Philadelphia, PA 19104
(610) 949-7800
www.cbsphilly.com

(All games broadcast on
SportsRadio 610 WIP;
Streaming on SJUHawks.com)

PRINT

Marc Narducci
Philadelphia Inquirer
400 North Broad St.
Philadelphia, PA 19101
(215) 854-4550
www.philly.com

Dick Jerardi
Philadelphia Daily News
400 North Broad St.
Philadelphia, PA 19101
(215) 854-5700
www.philly.com

Norristown Times Herald
410 Markley St.
Norristown, PA 19401
(610) 272-0660
www.timesherald.com

Bucks County Courier Times
8400 Route 13
Levittown, PA 19057
(215) 949-4215
www.phillyburbs.com

Delaware County Daily Times
500 Mildred Ave.
Primos, PA 19018
(610) 622-8880
www.delcotimes.com

Allentown Morning Call
101 North 6th St.
Allentown, PA 18105
(800) 999-5625
www.mcall.com

Courier-Post
Box 5300
Cherry Hill, NJ 08034
(856) 486-2424
www.courierpostonline.com

Doylestown Intelligencer
333 North Broad St.
Doylestown, PA 18901
(215) 345-3070
www.phillyburbs.com

Donald Hunt
Philadelphia Tribune
520 South 16th St.
Philadelphia, PA 19146
(215) 893-4080
www.phila-tribune.com

Connor Dehel
The Hawk
Saint Joseph's University
5600 City Ave.
Philadelphia, PA 19131
(610) 660-1079
www.sjuhawknews.com

WIRE SERVICE

Jack Scheuer/Dan Gelston
Associated Press
1835 Market St., Suite 1700
Philadelphia, PA 19103
(215) 561-1133
www.ap.org

TELEVISION

Comcast SportsNet
3601 South Broad St.
Philadelphia, PA 19148
(215) 952-5350
www.csnphilly.com



KYW (CBS, Ch. 3)
1555 Hamilton St.
Philadelphia, PA 19130
(215) 977-5315
www.cbsphilly.com

WCAU (NBC, Ch. 10)
10 Monument Rd.
Bala Cynwyd, PA 19004
(610) 668-5661
www.nbcphiladelphia.com

WPVI (ABC, Ch. 6)
4100 City Ave.
Philadelphia, PA 19131
(215) 581-4596
www.6abc.com

WTXF (Fox, Ch. 29)
330 Market St.
Philadelphia, PA 19106
(215) 925-7115
www.myfoxphilly.com

RADIO

KYW Radio (1060 AM)
400 Market St., 10th Floor
Philadelphia, PA 19106
(215) 238-4991
www.cbsphilly.com

**97.5 The Fanatic- ESPN
(950 AM, 97.5 FM)**
One Bala Plaza, Suite 339
Bala Cynwyd, PA 19004
(610) 667-8500
www.975thefanatic.com

Radio PA
4801 Lindle Road
Harrisburg, PA 17111
(800) 735-0202
www.radiopa.com



Why S-a-i-n-t Joseph's University?

The corporate title "S-a-i-n-t" Joseph's University, which has been in place since Saint Joseph's was granted university status by the Commonwealth of Pennsylvania in 1979, is now the public title of the institution for all aspects of its operations. Previously, the abbreviation "St." Joseph's University was permitted in a number of alumni and athletic contexts.

The vast majority of academic and government publications have referred to Saint Joseph's University since at least 1986, as have most campus references with the exception of athletics. However, university-wide "image campaign" revealed the need to clarify this policy both internally and externally.

According to the most recent edition of the Higher Education Directory, there are at least nine recognized "St. Joseph's" among the nation's colleges and universities. Only one of them – Saint Joseph's University, Philadelphia – is a university-level, Master's I, NCAA Division I institution. A complete spelling of Saint Joseph's University in all contexts will help eliminate any confusion among higher education and other public constituencies.

Style information for print, electronic and digital media is available. It includes accepted abbreviations of the corporate name (e.g., "SJU" or "St. Joe's" in headlines or certain informal references) as well as prohibited usages (e.g., partial abbreviations such as "St. Joseph's" or "Saint Joe's").

Please direct any questions to the Office of University Communications at (610) 660-1222.

MEDIA INFORMATION

The Athletic Communications Office at Saint Joseph's University welcomes your continued interest in the University and its men's basketball program. Publicity and media information for men's basketball is handled by Marie Wozniak, Associate Athletic Director for Communications. Please contact Wozniak at 610-660-1727 or via email at mwozniak@sju.edu, for information, interviews, photographs and credentials.



Marie Wozniak

ASSOCIATE ATHLETIC DIRECTOR/ COMMUNICATIONS
(MEN'S BASKETBALL CONTACT)

Office: (610) 660-1727
Email: mwozniak@sju.edu



Jack Jumper

ASSOCIATE DIRECTOR OF ATHLETIC COMMUNICATIONS

Office: (610) 660-3389
Email: jjumper@sju.edu



Joe Greenwich

ASSISTANT DIRECTOR OF ATHLETIC COMMUNICATIONS

Office: (610) 660-1738
Email: jgreenwi@sju.edu



Nikki Philpot

ATHLETIC COMMUNICATIONS ASSISTANT

Office: (610) 660-2601
Email: nicole.philpot@sju.edu

ATHLETIC COMMUNICATIONS DIRECTORY

Marie Wozniak (MBB Contact)	Office	610-660-1727
	Cell	610-999-3634
	Email	mwozniak@sju.edu
Jack Jumper	Office	610-660-3389
Joe Greenwich	Office	610-660-1738
Nikki Philpot	Office	610-660-2601
Athletic Communications Fax		610-660-1724
Press Row - Hagan Arena		610-660-2599
Press Row - The Palestra		215-898-4324

SAINT JOSEPH'S ATHLETICS ON THE WEB

www.sjuhawks.com
www.facebook.com/saintjosephshawks
www.youtube.com/saintjosephshawks
www.twitter.com/sjuhawks
www.twitter.com/sjuhawks_mbb

MEDIA CREDENTIALS

Credentials for media covering Saint Joseph's at Hagan Arena in 2011-12 should be made at least 24 hours in advance by contacting Marie Wozniak.

Priority is given to daily newspapers, radio/TV stations and other media who cover Saint Joseph's and its opponents on a regular basis. Internet sites and agencies that will be considered for credentials include those of national cable networks or established publications. Internet sites representing local or regional media outlets will be provided credentials on a space-available basis. Websites that sponsor "message boards" or "chat rooms" where people are able to post anonymous information are ineligible for consideration of credentials. Credentials will only be issued to those 18 years of age and older.

PHOTO CREDENTIALS

All photographers attending Saint Joseph's home basketball games must be credentialed. Requests for credentials should be made in at least 24 hours in advance to Marie Wozniak. Due to space demands, access to free-lance photographers is limited.

SCOUT CREDENTIALS

Credentials for NBA scouts must be requested in advance of the game by contacting Marie Wozniak.

RADIO POLICY

Radio stations designated as the primary visiting outlet can have access to phone lines at a cost of \$100 per line per game. (\$200 for ISDN), unless a reciprocal usage agreement exists. Visiting radio stations wishing to broadcast the game should contact Marie Wozniak at (610) 660-1727 or by email (mwozniak@sju.edu) to arrange phone lines.

INTERVIEWS

All requests for interviews with Phil Martelli and the Saint Joseph's players must be arranged through Marie Wozniak. Advance notice of at least 24 hours is preferred, but every attempt will be made to accommodate all requests. Players will not be available for interviews on game day, except for post-game interviews.

The Atlantic 10 conducts a teleconference with each of its head men's basketball coaches every Monday beginning in January. Media members should contact the A-10 for the schedule of coaches and the call-in number.

PRESS ROW

Only accredited members of the media and accredited scouts will be issued credentials to cover Saint Joseph's basketball, and only those with passes will be permitted to sit in press seating. Members of the media are reminded that press row is a working area and cheering for either team will not be tolerated.

MEDIA SERVICES

Saint Joseph's and opponent's game notes, statistics, Atlantic 10 Conference notes and game programs will be available to working members of the media. Halftime statistics will be available in the media room at Hagan Arena and will also be distributed on press row. Final statistics will be distributed in the media room following completion of the game. Fax service is available at both locations.

Complete Saint Joseph's game notes will be available 24 hours prior to the game on SJUHawks.com.

MEDIA PARKING

Media parking is available at the ROTC Lot on 54th Street behind Hagan Arena. Media members desiring to be on the parking list must contact Marie Wozniak at least 24 hours in advance of the game.

POST-GAME

Saint Joseph's head coach Phil Martelli will be available in the interview room following a post-game cooling off period. The Saint Joseph's locker room will be open to the media after the cooling off period.

PRACTICE

Saint Joseph's basketball practice is open to the media every day. Coach Martelli and the players are available for interviews in time slots before or after practice as designated. Please contact Marie Wozniak for the practice schedule.

www.SJUHawks.com

DIRECTORY/FACILITY INFO

SAINT JOSEPH'S ATHLETIC DIRECTORY

Vice President for Athletics/Athletic DirectorDon DiJulia
ddijulia@sju.edu610-660-1707
Assistant Vice President/Athletic Business AffairsJim Brown
jbrown@sju.edu610-660-1726
Associate Athletic Director/Varsity ProgramsRenie Shields
& Director of Compliance
shields@sju.edu610-660-2584
Associate Vice President/Athletic DevelopmentKatie Shields
kshields@sju.edu610-660-1231
Associate AD/Marketing & Corporate Partnerships ...Tim Curran
tcurran@sju.edu610-660-1702
Associate Athletic Director/FacilitiesAl Pendleton
alp2@sju.edu610-660-3292
Associate Athletic Director/CommunicationsMarie Wozniak
mwozniak@sju.edu610-660-1727
Assistant Athletic Director/FacilitiesJoe DeLacy
jdelacy@sju.edu610-660-1720
Assistant Athletic Director/RecreationCorey Shannon
cshannon@sju.edu610-660-3052
Director of Sports MedicineLori Rafferty
lraffert@sju.edu610-660-1699
Director of Educational Support ServicesJanet Greder
jgreder@sju.edu610-660-1728

University Switchboard610-660-1000
Athletics Office610-660-1707
Athletics Fax610-660-1716
Athletic Communications Fax610-660-1724

Address: 5600 City Ave., Philadelphia, PA 19131

University Websitewww.sju.edu
Athletics Websitewww.sjuhawks.com



TICKET INFORMATION
888-SJU-HAWK or 610-660-1712
Email: tickets@sju.edu
www.sjuhawks.com



MICHAEL J. HAGAN '85 ARENA

(GPS Address: 2450 N. 54th St., Philadelphia, Pa. 19131)

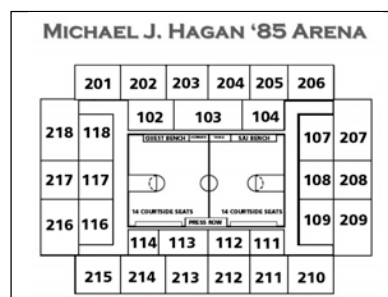
From the North: N.J. Turnpike to Exit 6 (Pa. Turnpike connector). Follow Pa. Turnpike to Exit 326 (Rte. 476). Follow 476 South to I-76 East, towards Philadelphia. Follow I-76 East to Exit 339 (Rte. 1, City Avenue). Follow two miles to SJU.

From the East: (Using either the Ben Franklin Bridge, via I-676, or the Walt Whitman Bridge.) Follow I-76 West to Exit 339 (Rte. 1, City Avenue). Follow two miles to SJU.

From the South: I-95 North to 476 North. Follow 476 North to Exit 5 (Rte. 1). Follow Rte. 1 North to SJU, approximately 10 miles.

From the West: Pa. Turnpike to Exit 326 (Valley Forge). Follow I-76 East, toward Philadelphia, to Exit 339 (Rte. 1, City Avenue). Follow two miles to SJU.

From the Airport: 291 East to I-76 West towards Valley Forge. Follow I-76 West to Exit 339 (Rte. 1, City Avenue). Follow two miles to SJU.



THE PALESTRA (selected games) University of Pennsylvania 215 S. 33rd St. Philadelphia, Pa. 19104

From the North: Take I-95 South to the I-676/Center City Exit. Follow signs to I-676 West. Take I-676 West until I-76 East and follow to the 30th St. Station Exit. Turn right at the end of the exit ramp onto Arch St. Follow Arch St. around and merge right onto John F. Kennedy Blvd. Merge right onto Market St. Turn left onto 34th St. to enter campus.

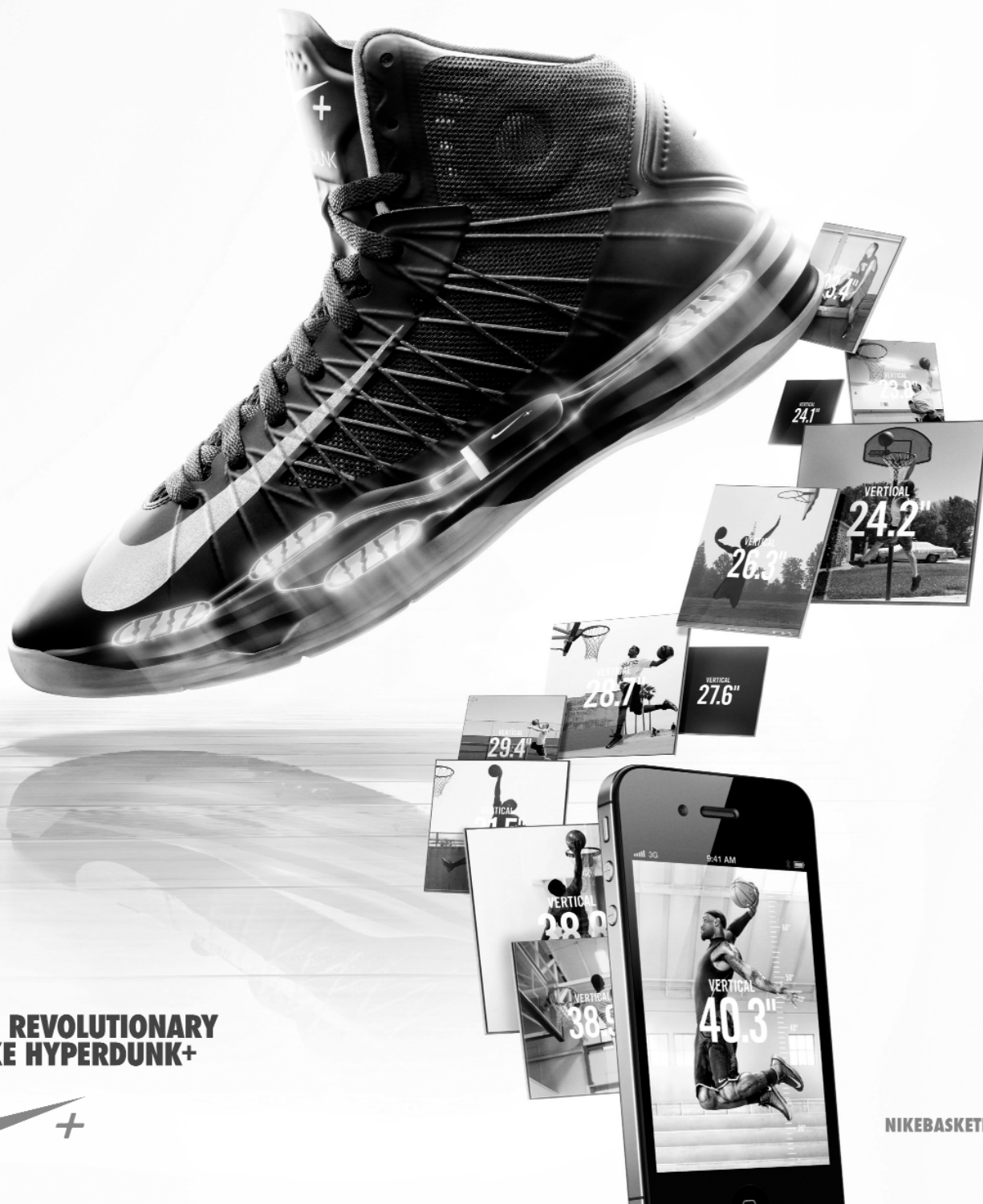
For the South: Take I-95 North to the I-676 Center City Exit which is approximately 7 miles north of the airport. Follow I-676 West until I-76 East. Follow I-76 East to the 30th St. Station Exit. Turn right at the end of the exit ramp onto Arch St. Follow Arch St. around and merge right onto John F. Kennedy Blvd. Merge right onto Market St. Turn left onto 34th St. to enter campus.

From I-76 West: Take I-76 West to the 30th St. Station Exit. Make a left at Market St. Take Market St. to 34th St. and turn left onto 34th St. to enter campus.

From I-76 East: Take I-76 East to the 30th St. Station Exit. Turn right at the end of the exit ramp onto Arch St. Follow Arch St. around and merge right onto John F. Kennedy Blvd. Merge right onto Market St. Turn left onto 34th St. to enter campus.



GAME ON, WORLD.



**THE REVOLUTIONARY
NIKE HYPERDUNK+**

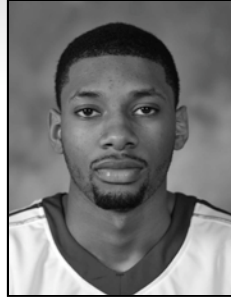


NIKEBASKETBALL.COM

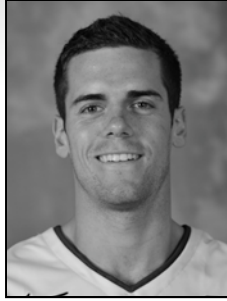
RADIO/TV ROSTER



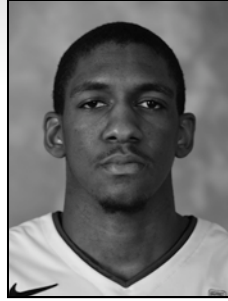
#0 EVAN MASCHMEYER
G, 6-3, 200, So.
Jeffersonville, Ind.



#1 C.J. AIKEN
C, 6-9, 201, Jr.
Conshohocken, Pa.



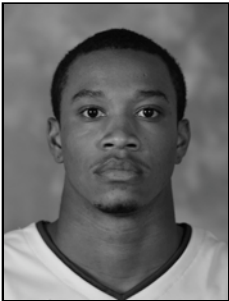
#5 CHRISTOPHER COYNE
G, 6-2, 180, Sr.
Brooklyn, N.Y.



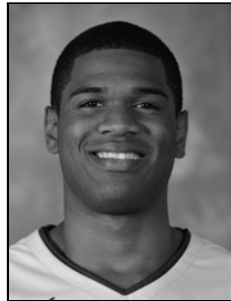
#10 LANGSTON GALLOWAY
G, 6-2, 200, Jr.
Baton Rouge, La.



#11 DARYUS QUARLES
F, 6-6, 180, Jr.
Paulsboro, N.J.



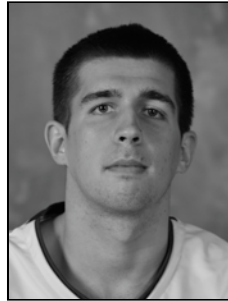
#12 KYLE MOLOCK
G, 6-2, 190, Fr.
Dublin, Ohio



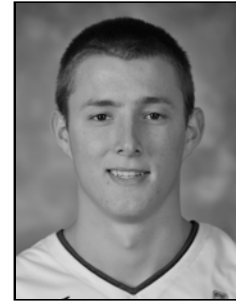
#13 RONALD ROBERTS, JR.
F, 6-8, 220, Jr.
Bayonne, N.J.



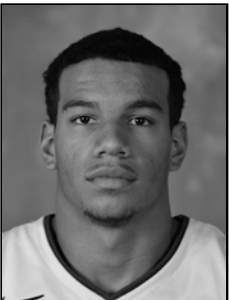
#15 ISAIAH MILES
F, 6-7, 228, Fr.
Owings Mills, Md.



#21 HALIL KANACEVIC
F, 6-8, 256, Jr.
Staten Island, N.Y.



#22 TAYLOR TREVISAN
G, 6-2, 204, Sr.
West Chester, Pa.



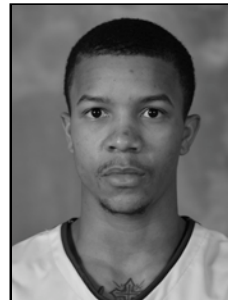
#24 CHRIS WILSON
G, 6-3, 210, So.
Fayetteville, N.C.



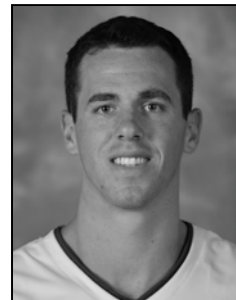
#32 PAPA NDAO
F, 6-8, 223, So.
Dakar, Senegal



#34 JAVON BAUMANN
F, 6-8, 254, Fr.
Solms, Germany



#35 CARL JONES
G, 5-11, 160, Sr.
Garfield Heights, Ohio



#41 COLIN KELLY
F, 6-5, 210, Jr.
West Deptford, N.J.



PHIL MARTELLI
Head Coach
18th season



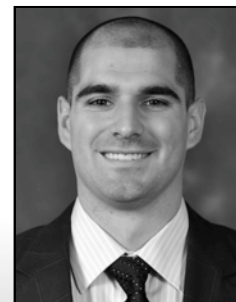
MARK BASS
Assistant Coach
14th season



DAVID DUDA
Assistant Coach
7th season



GEOFF ARNOLD
Assistant Coach
5th season



ROB SULLIVAN
Director of Basketball
Operations
7th season